

### Vehicle Applications

#### BMW

##### 1 SERIES

2011 - Up 1 Series (5 Door)

2012 - Up 1 Series (3 Door)

##### 3 SERIES

2012 - Up 3 Series Sedan

2012 - Up 3 Series Wagon

##### 4 SERIES

2013 - Up 4 Series Coupe

2013 4 Series Convertible

### Features

- Plug and Play connectors make installation simple and easy.
- Utilizes the latest mapping version of iGo Primo.
- 2 A/V Inputs + Reverse camera input

### Radio Compatibility

- BMW Business / Professional Radio with 4+2 Pin HSD LVDS

### Note

- This interface does not offer the force RVC feature.

### Parts Included



BM-77N Module



CAN Box



BM-77N T-Harness



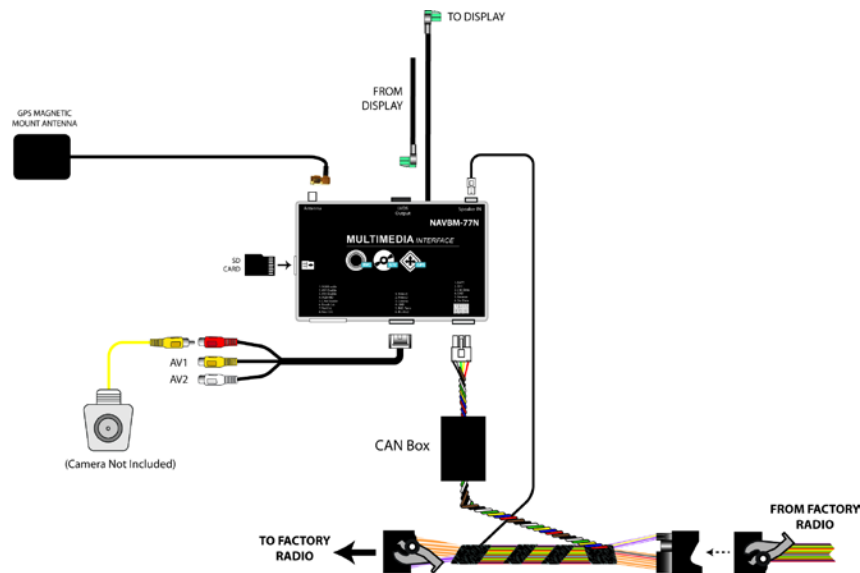
Video Input Cable



GPS Antenna



### Wiring Diagram



### Installation Instructions

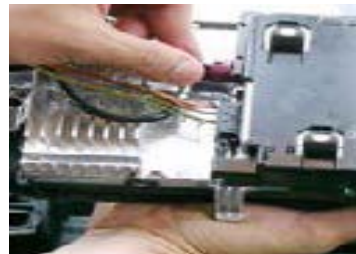
#### **BEFORE YOU START:**

- Set the parking brake before working on the vehicle.
- Disconnect the negative side of the battery to avoid short circuits during installation.
- Check that you have all the necessary parts listed on the "Parts Included" section.

#### **CONNECTION TO THE OEM DISPLAY**



1. Remove the factory display unit.



2. Disconnect the 6-Pin MAROON LVDS connector and plug into the LVDS OUTPUT of the NAVBM-77N module.



3. Plug in the Blue 6-Pin LVDS Harness from the NAVBM-77N module to the factory display unit.

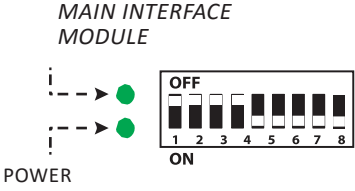
#### **CONNECTION TO THE RADIO**

1. Remove radio and unplug the Quadlock connector from behind the radio.
2. Plug in the Quadlock connector of the BM-77N T-harness to the radio.
3. Connect the OEM Quadlock connector to the female Quadlock connector of the BM-77N T-harness.
4. Connect the navigation antenna and mount the magnetic antenna to a desired location.
5. Plug in the 6-Pin Power plug from the CAN box to the power connection of the BM-77N module.
6. Plug the 4-Pin audio connector from the BM-77N T-harness to "Speaker In" on the BM-77N module.



### DIP Switch Settings

**MAIN INTERFACE MODULE**



POWER

ON

OFF

1 2 3 4 5 6 7 8

**DIP SWITCH DESCRIPTION**

UP = OFF    DOWN = ON

DIP 1 = ON RGB Enable / OFF RGB Disable  
 DIP 2 = ON AV1 Enable / OFF AV1 Disable  
 DIP 3 = ON AV2 Enable / OFF AV2 Disable  
 DIP 4 = RGB (ON= 800x480p / OFF= 400x240p)  
 DIP 5 = ON AV4 Enable / OFF Green Wire  
 DIP 6 = ON IR Programming / OFF Normal use  
 DIP 7 = ALWAYS ON  
 DIP 8 = ON (6.5" screen) / OFF (8.8" or 10.2" screen)

**LED INDICATORS**

**DATA LINK STATUS:**  
 Blinking = No BUS Detected. Solid = BUS Recognized.  
 OFF = Power Down / Sleep Mode.

**POWER STATUS:**  
 ON = Power On  
 OFF = Power Off

**NOTES:**

- Before connecting the main module, set the proper DIP switch to the 'ON' position.
- Make sure to set the AV source being used to the 'ON' position.
- After each change of the DIP switch settings, we recommend powering down the module, then restarting the vehicle.
- The Video-In-Motion feature does not require activation. This feature is permanently ON and will not disturb the GPS performance.

### Connecting the Video and Audio Inputs



1. Plug the 6-Pin Video Harness to the main interface module. This allows 3 video inputs.



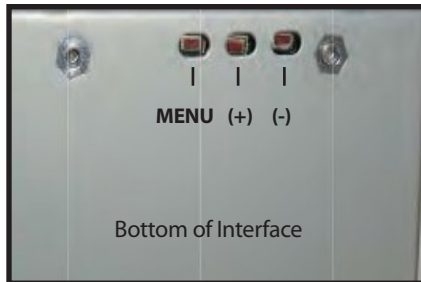
2. Plug the camera and video devices to the RCA video inputs. See right for video input description.

#### VIDEO INPUT DESCRIPTION:

**YELLOW** = Video 1  
**WHITE** = Video 2  
**RED** = Reverse Camera  
**GRAY WIRE** = Optional IR Output



### Video Settings



Menu options are available via the menu buttons on the bottom side of the interface module.

**“Guide Control.....ON”** = Set ON/OFF to enable parking guide line.

**“Guide L Option”** = Set the left guide line’s offset on screen, when the value changes, the guide moves to its horizontal location.

The **“PDC Offset Option”** is used to tune the PDC location on the right side of LCD when in reverse mode, while the Left 75% is used to display the inserted camera video. Some cars have PDC in the center of screen, while some has the PDC on the right. This option makes it always centered.



When the reverse gear is engaged the reverse image will be shown. And guideline can be shown if enabled in the OSD.



#### Operating Instructions



1. Press the "MENU" button for 5 seconds to toggle between Navigation and video inputs. Each toggle of the input requires the "MENU" button to be pressed for 5 seconds.



2. Go to navigation mode and let the map load.



3. Once the map has loaded, you can begin to use the navigation. Use the iDrive knob to navigate through the settings.



4. To play video, press the "MENU" button on the iDrive knob for 5 seconds and select AV1 or AV2, depending on which input the AV source is plugged into.



5. Video will now be shown on the display and audio will be heard from the speakers.



6. Put the gear in reverse and the back up camera image will be shown on the screen along with the PDC.

