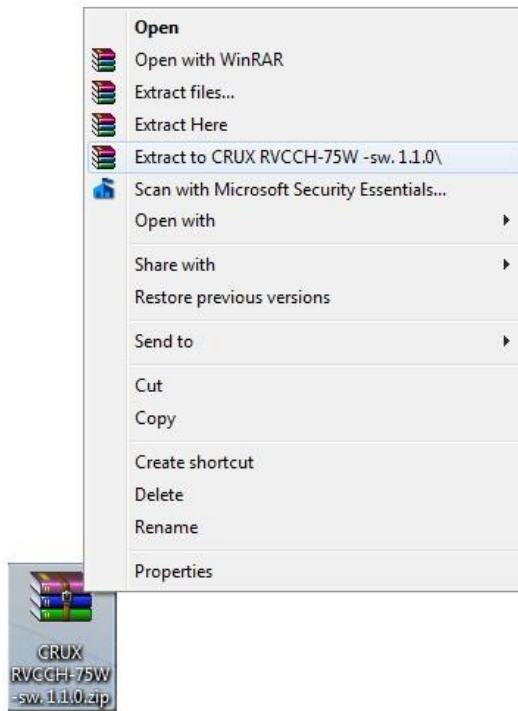
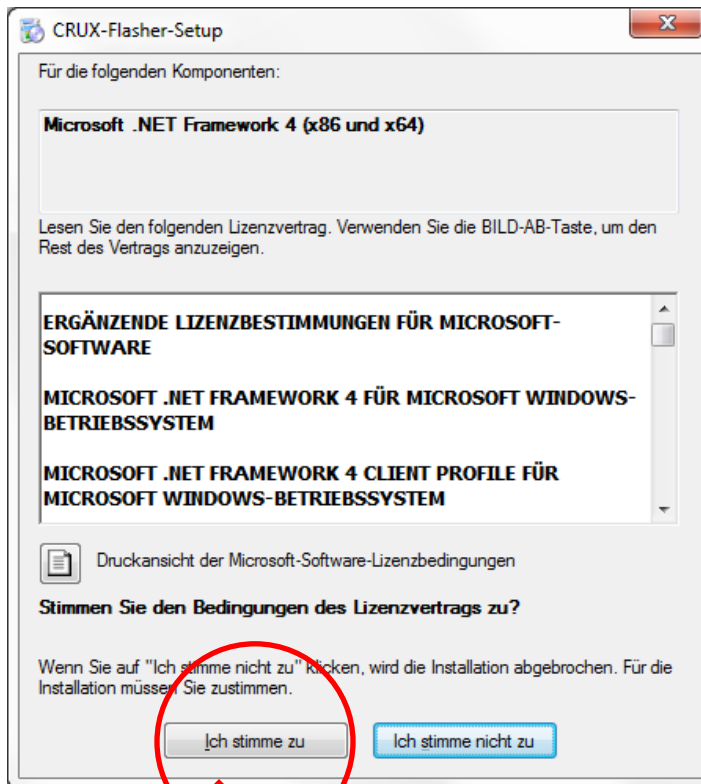


CRUX Interface Update Program Guide

1. Unzip folder or Extract files from folder.

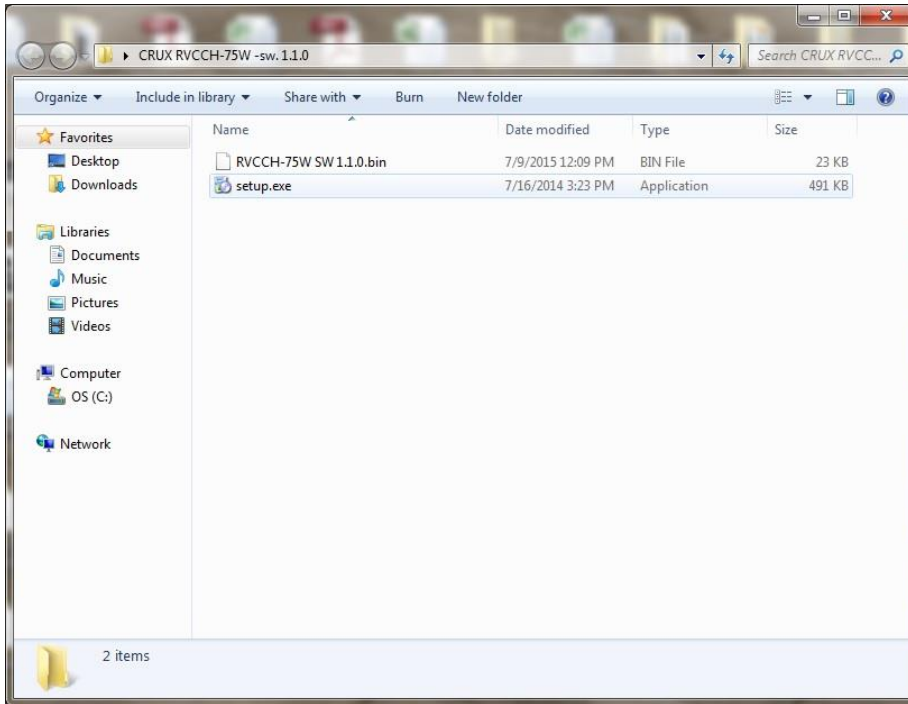


- 2.



CLICK HERE

3. Double-Click “setup.exe”



4. Click “Install”



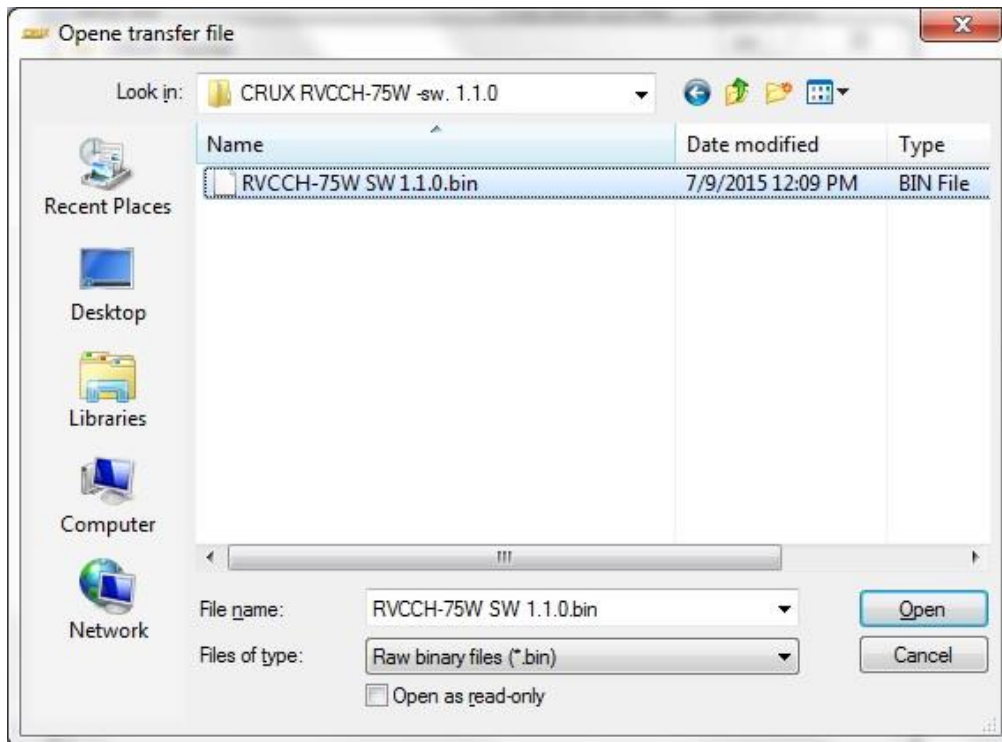
5. The program will open.



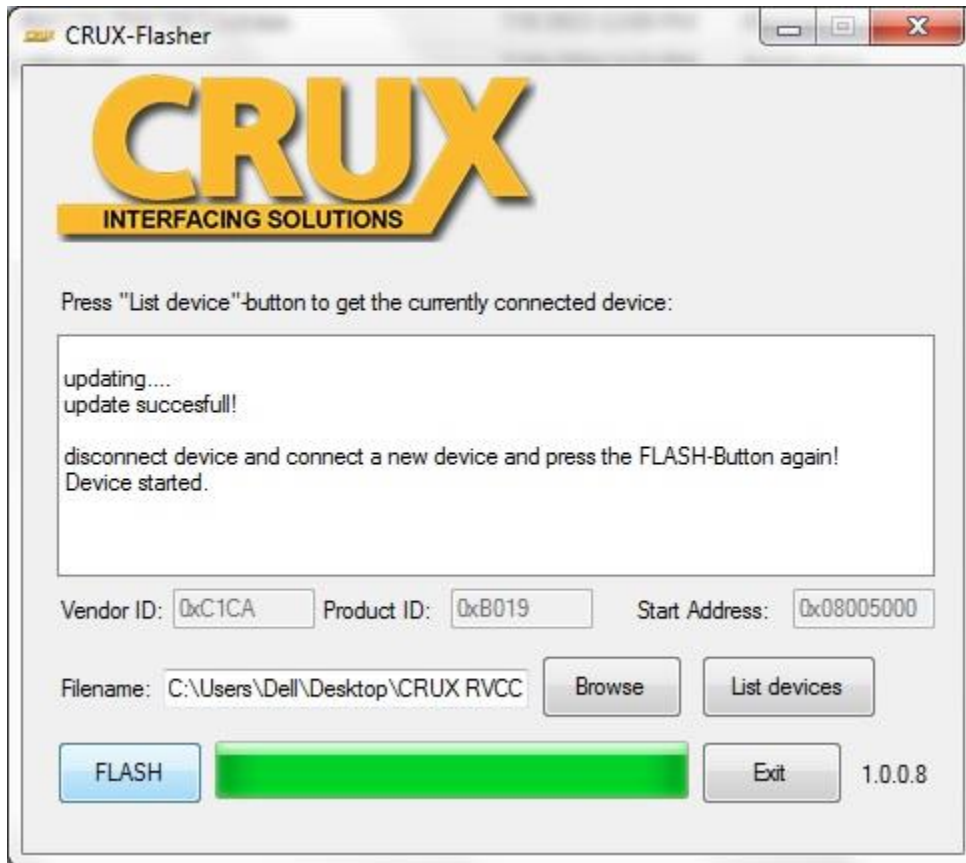
6. Connect interface to USB mini cable, wait for device installer to finish and click “List Devices”.
 - a. Interface ProductID will show up in display window.



7. Click on “Browse” and select and OPEN “RVCCH-75W SW 1.1.0.bin” BIN file.



8. Press "Flash", wait for update to finish display will say "update successful!".



9. FINISHED, press "exit" and disconnect interface module.