

BLUETOOTH INTERFACE FOR SELECT 2003-UP HONDA VEHICLES

BEEBH-28

BEEBH-02
BEEBH-03
BEEBH-04
BEEBH-05

APPLICATIONS

BEEBH-28

2008 - 2012 Accord DX/EX/LX
2006 - 2011 Civic/ Si
2007 - 2012 CRV
2009 - 2012 Fit
2008 - 2011 Odyssey
2009 - 2012 Pilot
2009 - 2012 Ridgeline

BEEBH-02

2003 - 2007 Accord DX/EX/LX
2005 - 2006 CRV
2003 - 2008 Element
2005 - 2007 Odyssey
2003 - 2008 Pilot
2006 - 2008 Ridgeline

BEEBH-03

2012 - UP CRV
2012 - UP Civic

BEEBH-04 / AMPLIFIED

2008 - 2012 Accord
2008 - 2012 Pilot
2006 - 2011 Civic (Non-Nav)

BEEBH-05 / AMPLIFIED

2005 - 2006 CRV
2003 - 2007 Element
2003 - 2007 Pilot
2005 - 2007 Odyssey (Non-Nav)

IMPORTANT NOTE

THIS KIT WILL ONLY SUPPORT STEERING WHEEL CONTROL EQUIPPED VEHICLES.

We recommend reading this installation guide first before starting any work. Following these instructions from "Start" to "Finish" will ensure a smooth and hassle free installation. We offer telephone support M-F 9:00 AM - 5:00PM PDT at 1 (855) 822-1348. We are here to help.

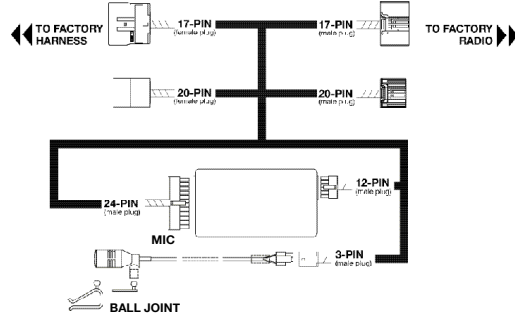
PRELIMINARY:

- Disconnect the positive(+) battery cable for radios that are non-navigation. Radios that are navigation ready should not disconnect the battery cable. Please use caution when installing. Do not install the interface near or on the vehicle's HVAC system. This will prevent overheating and condensation build up.
- Determine the proper installation method for your specific vehicle. Use overview to help you determine installation method.

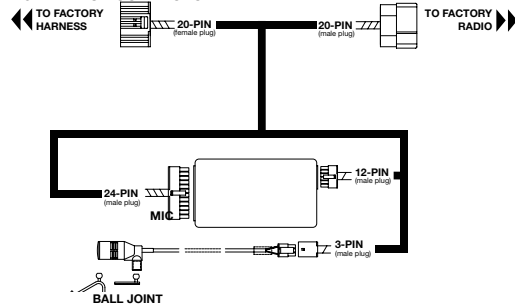
INSTALLATION

1. Remove the factory radio to gain access to the factory radio wiring connectors.
2. Disconnect the factory connectors from the rear of the factory radio.
3. Connect the male connectors of the interface power harness into the factory radio.
4. Reconnect the factory connectors into the mating connectors of the interface harness.
5. Connect the male 3-pin connector into the pigtail connector.
6. Route the microphone to a desired location, (for example near the rear view mirror).
7. Re-install a factory radio back into the vehicle's dash.

17 AND 20-PIN CONNECTORS:



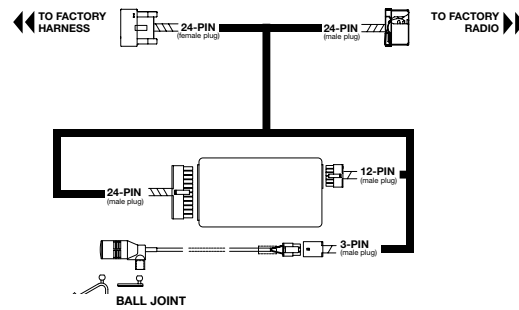
20-PIN BLUE CONNECTOR:



MOUNTING THE MICROPHONE

1. Insert the mounting clip into the ball joint on the microphone.
2. Mount the clip on your visor or near the rear view mirror.
3. Route the remaining cable along the edge of the roof liner and towards the back of the radio, hiding the cable from sight.

24-PIN CONNECTORS:



INITIAL PAIRING TO THE VOICE PROMPTS:

1. READY (POWER ON)
2. SEARCHING PHONES (FOR PREVIOUS PAIRED PHONES)
3. PLEASE SEARCH AND SELECT THE "BEEBH-28" DEVICE FROM MOBILE PHONE AND ENTER "0000".
4. YOU ARE NOW READY TO USE THE HF SYSTEM.

Note: The Bluetooth interface will remember up to the last 8 devices.

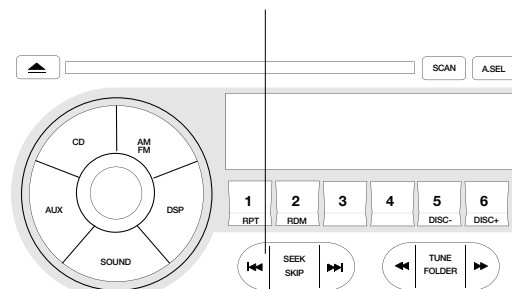
Note: If pairing is unsuccessful after several attempts power off then power back on to re-attempt, if unsuccessful please contact our tech support line.

AUTO RE-CONNECT:

1. The BEEBH-28 module will automatically re-connect the a previously paired mobile phone when the ignition is turned "ON" to the vehicle and the mobile phone's Bluetooth feature is also on.

Note: The Bluetooth module will re-connect with the last mobile phone's it was paired with. If no mobile phone is not found, it will revert to the pairing process.

NO BLUETOOTH CONTROL FROM RADIO CONTROLS



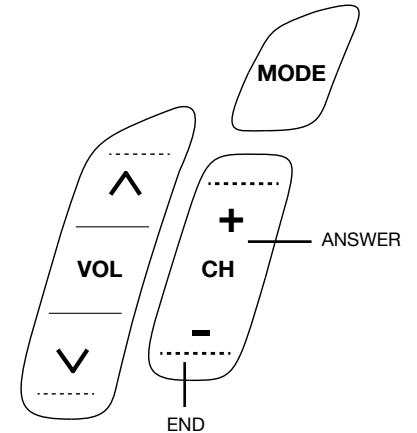
All features of this module may vary by mobile phone manufacturer. For questions on your mobile phone's features, please reference the mobile phone's user manual for information.

Note: If an incoming call is answered from the mobile phone's keypad, the call will direct itself to the headset on the mobile phone. To re-direct the phone call to the "BEEBH-28", it must be done directly from the mobile phone.

Note: When transferring a phone call to the mobile phone for privacy, the user must re-connect the BEEBH-28 and the mobile phone by selecting the module from the device menu on the phone. Note: If after ending a call the radio is powered "OFF", you must power "ON" the radio to regain volume control.

USING THE STEERING WHEEL CONTROL BUTTONS

VOICE DIAL	PRESS AND HOLD CH DN FOR 2 SEC
ANSWER	PRESS CH UP BUTTON ONCE
END A CALL	PRESS CH DN BUTTON ONCE
REJECT	PRESS CH DN BUTTON ONCE
ANSWER SECOND CALL	PRESS CH UP BUTTON ONCE
SWITCH BETWEEN CALLS	PRESS CH UP BUTTON ONCE
INCREASE VOLUME	PRESS VOLUME UP ONCE
DECREASE VOLUME	PRESS VOLUME DN ONCE
PRIVACY MODE	PRESS CH UP ONCE



Note: Premium Audio Systems need to "Turn On" the radio for hands-free audio to be heard.

BEEBH-28

BEEBH-02

BEEBH-03

BEEBH-04

BEEBH-05

APPLICATIONS

BEEBH-28

2008 - 2012 Accord DX/EX/LX
 2006 - 2011 Civic/ Si
 2007 - 2012 CRV
 2009 - 2012 Fit
 2008 - 2011 Odyssey
 2009 - 2012 Pilot
 2009 - 2012 Ridgeline

BEEBH-02

2003 - 2007 Accord DX/EX/LX
 2005 - 2006 CRV
 2003 - 2008 Element
 2005 - 2007 Odyssey
 2003 - 2008 Pilot
 2006 - 2008 Ridgeline

BEEBH-03

2012 - UP CRV
 2012 - UP Civic

BEEBH-04 / AMPLIFIED

2008 - 2012 Accord
 2008 - 2012 Pilot
 2006 - 2011 Civic (Non-Nav)

BEEBH-05 / AMPLIFIED

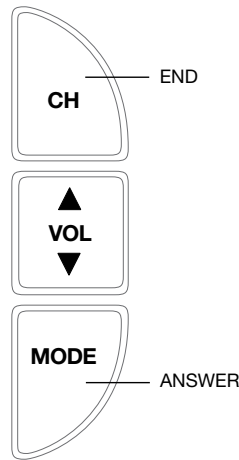
2005 - 2006 CRV
 2003 - 2007 Element
 2003 - 2007 Pilot
 2005 - 2007 Odyssey (Non-Nav)

IMPORTANT NOTE

THIS KIT WILL ONLY SUPPORT
 STEERING WHEEL CONTROL
 EQUIPPED VEHICLES.

USING THE 4-BUTTON STEERING WHEEL CONTROL BUTTONS

ANSWER	PRESS MODE BUTTON ONCE
END A CALL	PRESS CH BUTTON ONCE
REJECT	PRESS CH BUTTON ONCE
ANSWER SECOND CALL	PRESS MODE BUTTON ONCE
SWITCH BETWEEN CALLS	PRESS MODE BUTTON ONCE
INCREASE VOLUME	PRESS VOLUME UP ONCE
DECREASE VOLUME	PRESS VOLUME DN ONCE
PRIVACY MODE	PRESS CH MODE BUTTON ONCE
ENTER MAIN MENU	HOLD CH BUTTON



USING THE MENU STRUCTURE:

MISSED CALLS:

1. Press and Hold the "CH DN" button.
2. Press the "TALK" button once to enter the menu options. Continue to press the "TALK" button till you hear the interface announce "MISSED CALLS", and wait for the numbers to be announced.
3. When the number you wish to dial is announced, press the "SEEK UP" button once to make the call.

INCOMING CALLS:

1. Press the "TALK" button once.
2. Press the "TALK" button once to enter the menu options. Continue to press the "TALK" button till you hear the interface announce "INCOMING CALLS", and wait for the numbers to be announced.
3. When the number you wish to dial is announced, press the "SEEK UP" button once to make the call.

OUTGOING CALLS:

1. Press the "TALK" button once.
2. Press the "TALK" button once to enter the menu options. Continue to press the "TALK" button till you hear the interface announce "OUTGOING CALLS", and wait for the numbers to be announced.
3. When the number you wish to dial is announced, press the "SEEK UP" button once to make the call.

PHONE MUST BE UNPAIRED TO ENTER THE FOLLOWING MENU STRUCTURE

SETTING TTS VOLUME:

1. Press the "TALK" button twice.
2. Press the "TALK" button once to enter the menu options. Continue to press the "TALK" button till you hear the interface announce "SETTING VOLUME", and wait for her announcement.
3. Set the TTS volume by pressing the volume Vol+ and Vol- waiting for the announcement. Each announcement will indicate the volume level of the TTS.
4. When the desired volume level is reached, press the "SEEK UP" button once to select.

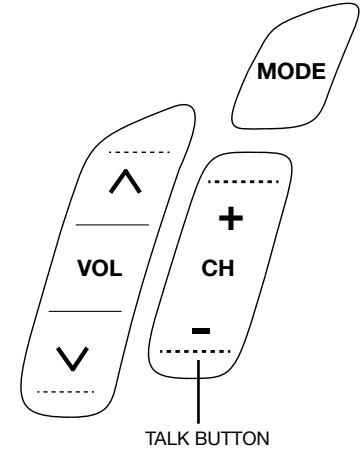
DELETE ALL PAIRED DEVICES:

This feature allows you to delete all paired devices on the interface. The module does NOT allow the user to only clear one device. The module will delete all previously paired devices only

1. Press the "TALK" button twice.
2. Press the "TALK" button once, to enter the menu options. Continue pressing the "TALK" button till you hear the interface announce "DO YOU WANT TO DELETE PAIRED PHONE LIST".
3. Press the "SEEK UP" button once within 3 seconds to confirm.
4. The interface will ask "ARE YOU SURE", press the "SEEK UP" button once to re-confirm..

Note: The menu structures only remember the last 24 numbers in the call log from dialed from the mobile phone.

Note: All menu structures work in 3 second increments. If after 3 seconds the interface will time-out.



Have a bad connection when using the A2DP or Handsfree profiles?	Delete all paired devices on your mobile device and on the UBT. (See Using The Menu Structure)
Are you experiencing random static interruptions during your phone calls?	Remove the battery on the mobile device for a minimum of 15 Seconds.
Have you paired your mobile device, and get no sound from the radio? Try resetting the TTS volume setting.	With the phone paired to the UBT, enter the "SETTING TTS VOLUME" under menu structure. The default level is at volume 4. 